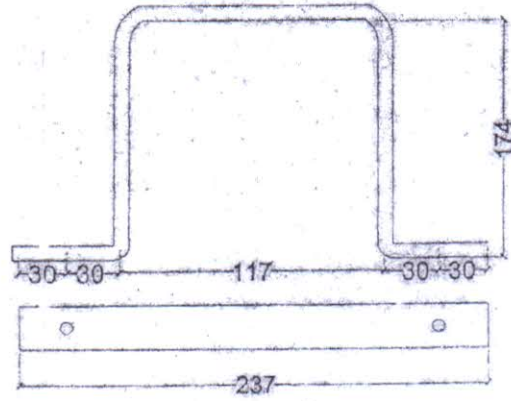


MS-FLAT 50X8-3.14 KG/M



NOTE:-

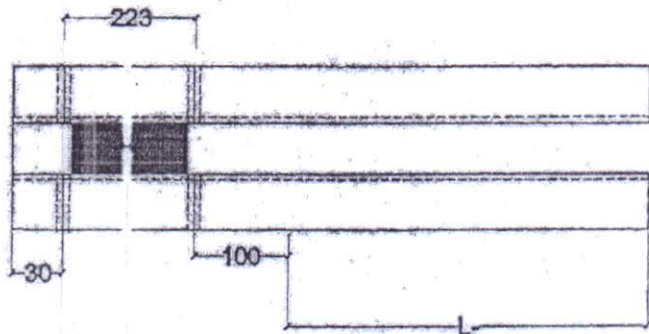
1. All Dimension in MM
2. Not to Scale the Drg.
3. Hole Size 17.5 mm
4. If Transformer Installed at 4 Meter Hight from ground level

2 NOS. MS FLAT 50x8 mm L= 553 MM (1,736 KG EACH)

ANNEXURE - B(2)

TN-1365 JVVNL

CLAMP FOR MOUNTING OF 10 & 10/16/25 KVA TRF.



According to Size (diameter) of Tank

NOTE:-

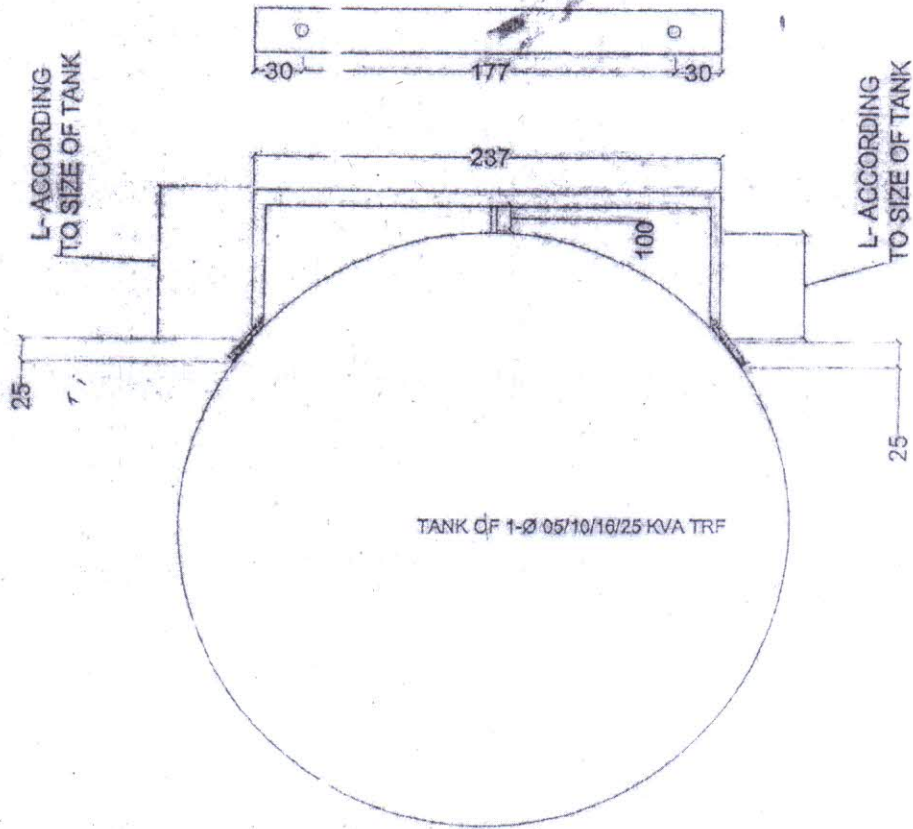
1. All Dimension in MM
2. Not to Scale the Dwg.
3. Hole Size 17.5 mm
4. M.S. Angle 50x50x8 mm
5. If TRF, Installed at 4 Mtr. high from Ground level

ANNEXURE - C

TN-1366 JDVNL

BASE ANGLE FOR MOUNTING OF SINGLE PHASE
25 KVA TRF.

MS FLAT 60X8-3.14 KG/M



NOTE -

1. All Dimension in MM
2. Not to Scale the Drg.
3. Hole Size 17.5mm
4. M.S. Flat 60x8 mm

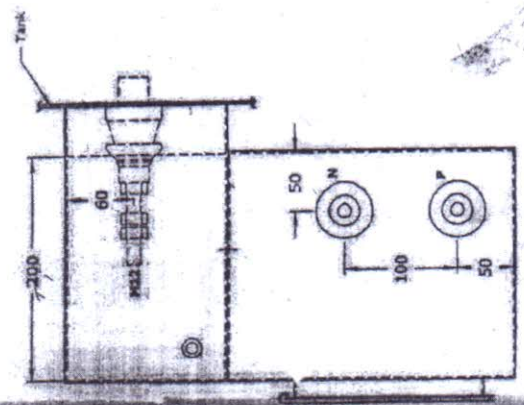
TANK SIZE (DIA.) OF EACH MANUFACTURER OF TRF. IS DIFFERENT

ANNEXURE - B(1)

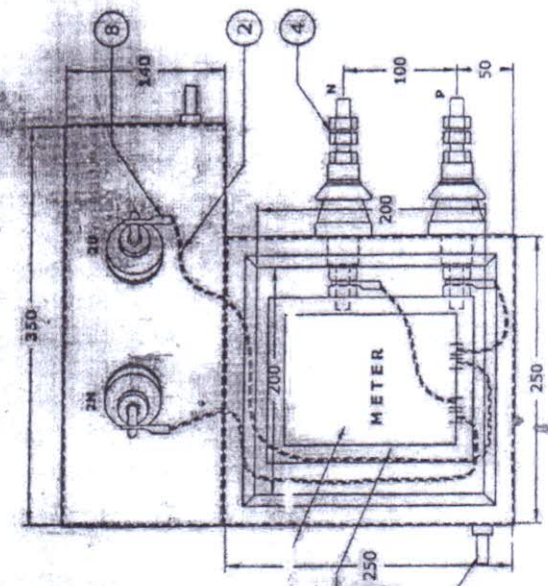
TN-1355 JDVVNL

Annexure - 13

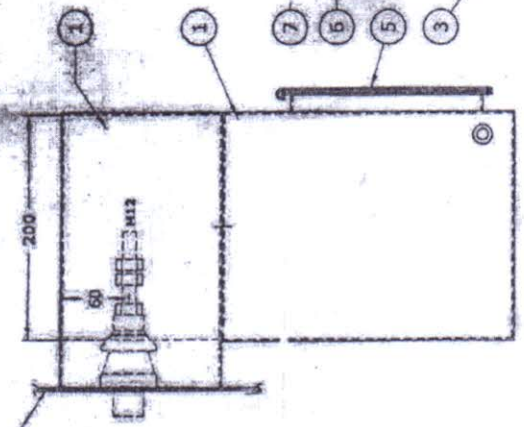
1.1 KV LV CABLE BOX FOR SINGAL PHASE T/F



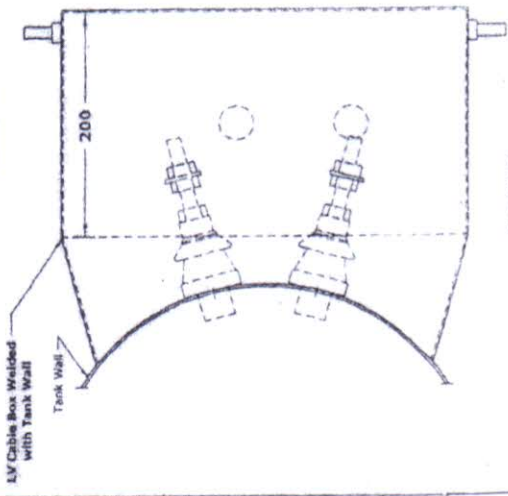
SIDE VIEW



FRONT VIEW



SIDE VIEW



TOP VIEW

Electrical Clearance inside Box min

P - E	20 mm
-------	-------

Description	10 KVA		16 KVA		25 KVA	
	Cat No / Thk	Qty.	Cat No / Thk	Qty.	Cat No / Thk	Qty.
Lugs for LT Terminal	7037 / 1.8 mm	4	7040 / 1.8 mm	4	7043 / 2 mm	4
Outgoing LT Terminals	1.1 KV / 250 A	2	1.1 KV / 250 A	2	1.1 KV / 250 A	2
Terminal Ends for Meter	ACP-251 / 7.2x1.8 mm	4	ACP-252 / 8.2x1.8 mm	4	ACP-254 / 10x2.0 mm	4

Description	10 KVA		16 KVA		25 KVA	
	Size	Size	Size	Size	Size	Size
Copper Flexible Cable LT Terminal to Meter & Outgoing Bushings	25 ² mm	35 ² mm	70 ² mm	70 ² mm	70 ² mm	70 ² mm

#	DESCRIPTION
1	LV Cable Box with Meter Distribution Bo
2	PVC Covered cable
3	Body Earthing Terminal (M10 Bolt)
4	Outgoing Bushings
5	Sliding Cover with glass
6	Glass (size 115x150x6mm) for Meter
7	Meter
8	Lugs

NOTE: ALL DIMENSIONS ARE IN MM. & TOLERANCE ±5%

R1	Date
	19.06.20

TN-1366, JSD/VNL