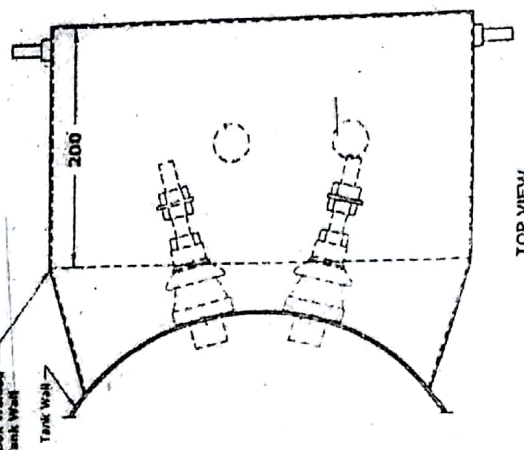
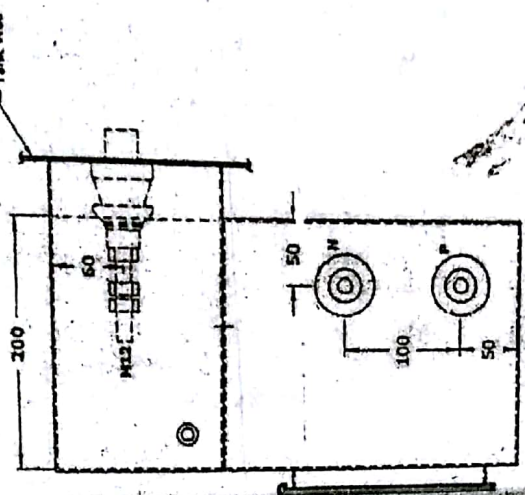
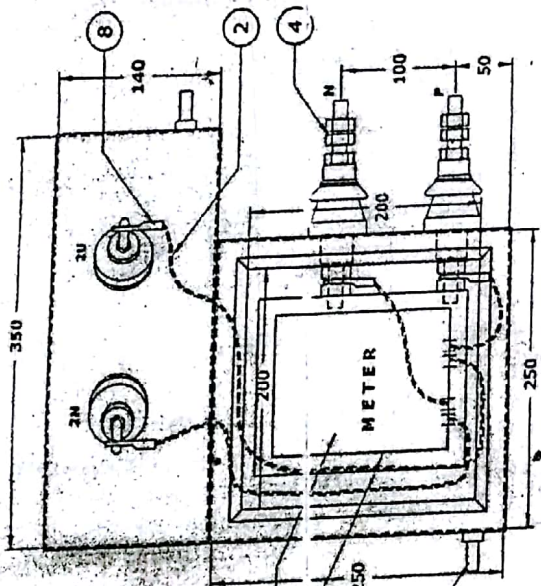
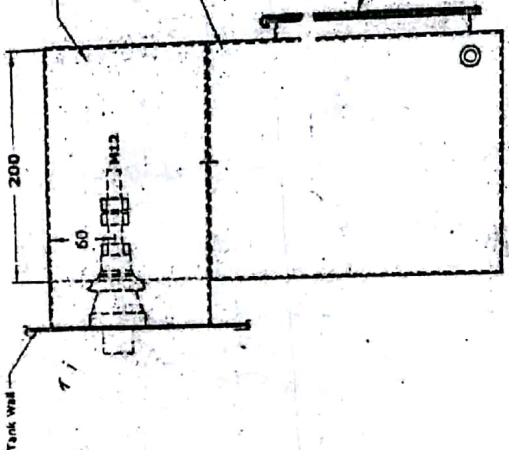


**1.1 KV LV CABLE BOX FOR SINGAL PHASE T/F**



Electrical Clearance  
Inside Box min  
P - E 20 mm

Description	5 KVA Cat No / Thk	Qty.
Lugs for LT Terminal	7028 / 1 mm	4
Outgoing LT Terminals	1.1 KV / 250 A	2
Terminal Ends for Meter	ACP-7 / 4.3x1.1 mm	4

Description	5 KVA Size
Copper Flexible Cable LT Terminal to Meter & Outgoing Bushings	10 <sup>3</sup> mm

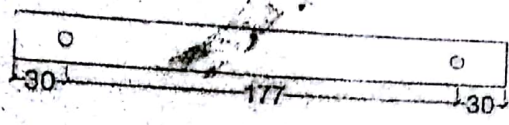
QTY	DESCRIPTION
8	Lugs
7	Meter
6	Glass (size 115x150x6mm) for Meter
1	Sliding Cover with glass
1	Outgoing Bushings
2	Body Earthing Terminal (M10 Bolt)
2	PVC Covered cable
1	LV Cable Box with Meter Distribution Box

NOTE: ALL DIMENSIONS ARE IN MM. & TOLERANCE ±5%

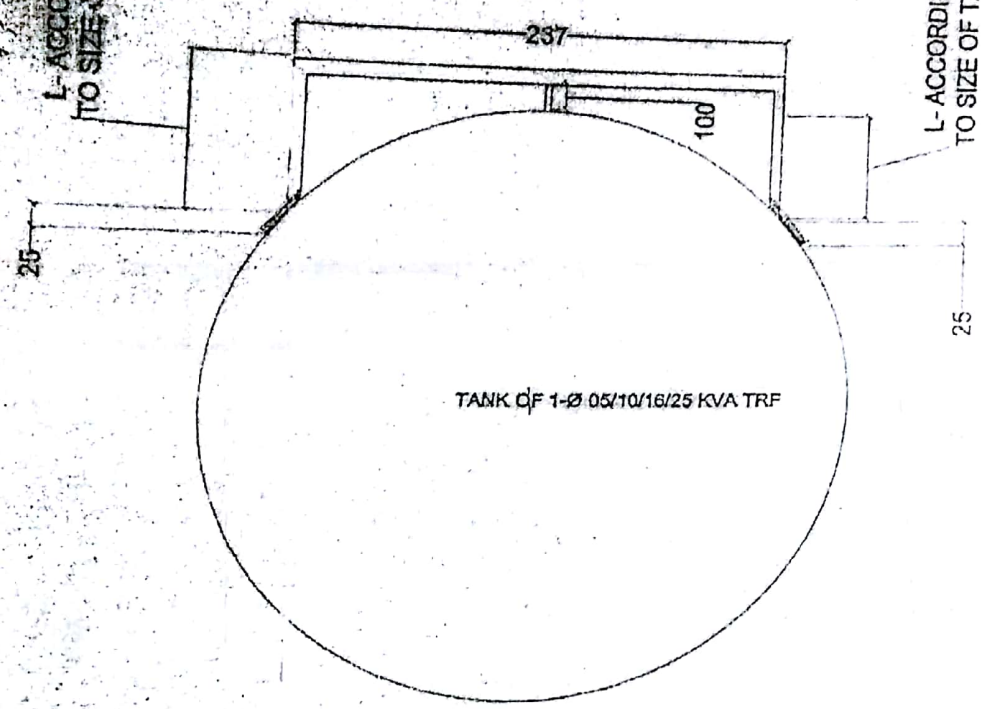
R1	R2	Date
		19.06.2017

TN-1426  
SDY YNL

L- ACCORDING TO SIZE OF TANK



L- ACCORDING TO SIZE OF TANK



TANK OF 1-Ø 05/10/16/25 KVA TRF

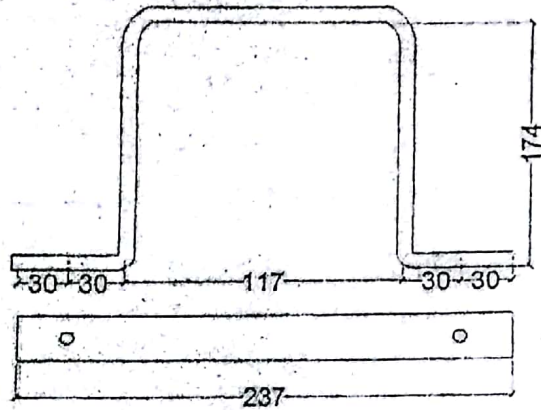
- NOTE :-
- 1. All Dimension in MM.
  - 2. Not to Scale the Drg.
  - 3. Hole Size 17.5mm
  - 4. M.S. Flat 60x6 mm

TANK SIZE (DIA.) OF EACH MANUFACTURER OF TRF. IS DIFFERENT

ANNEXURE - B(1)

TN-1426 SDVYNL

MS FLAT 50X8-3.14 KG/M



NOTE :-

- 1. All Dimension in MM
- 2. Not to Scale the Dwg.
- 3. Hole Size 17.5 mm
- 4. If Transformer Installed at 4 Meter Hight from ground level

2 NOS. MS FLAT 50x8 mm L=553 MM (1.736 KG EACH)

ANNEXURE - 13(2)

TN-1826 J.DVYNL

CLAMP FOR MOUNTING OF 10 5/10/16/25 KVA TRF.